



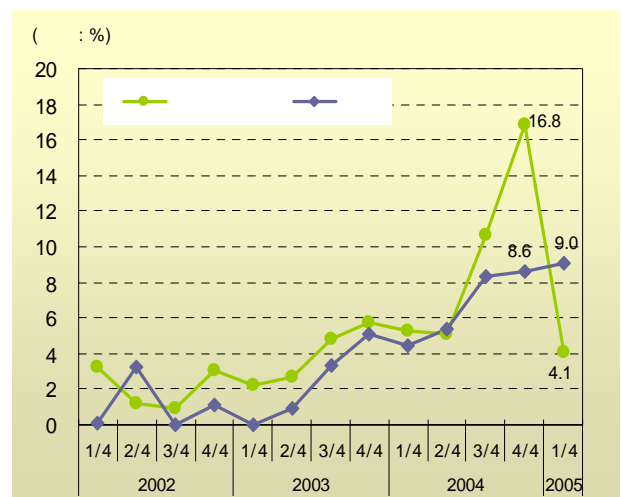
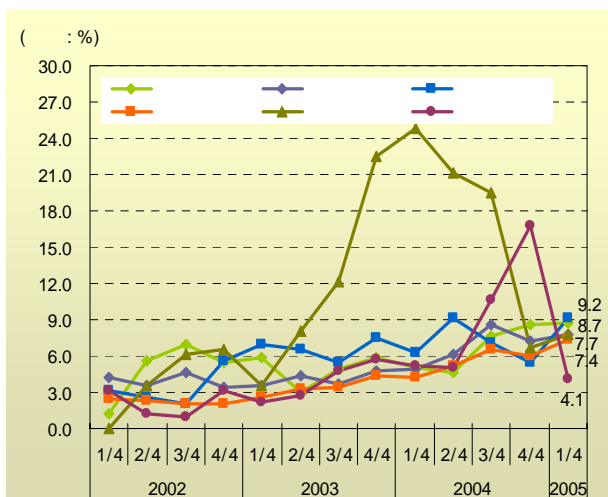
Office Market Trend

2005 1/4 6

() 2005 1/4 583
 , , , ,
 6
 (10 10,000m²)
 “ 가 ”
 “ ”

가 가 . 2005
 1/4 , , , ,
 2003 2/4
 가

가 2004 3/4
 , 2004 1/4
 , 7.7% 1.0%P
 가



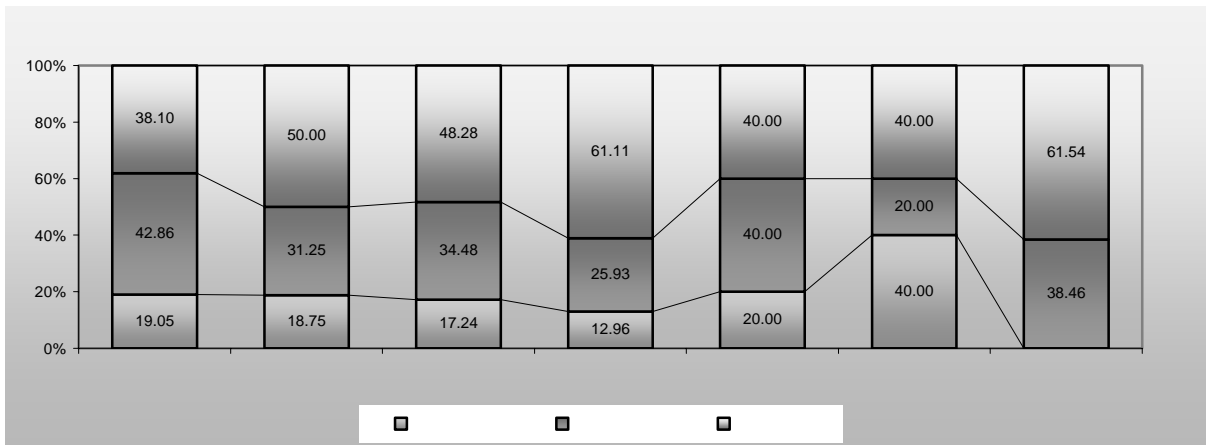
2005 1/4 9.2% 가 3.7%P
 C S 3,700 ,
 K 500 M





Office Market Trend

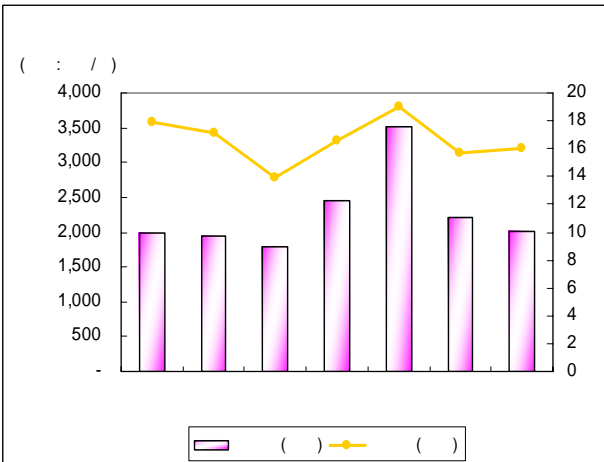
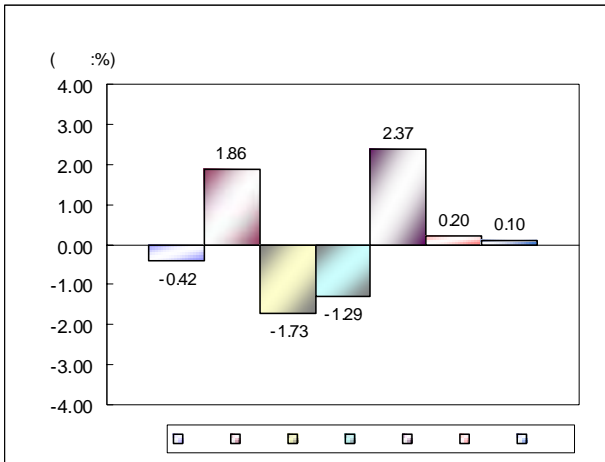
350 2002 , 가
 2004 2/4
 7.7% 2 , 1,300 , 1,100
 7.4% 3,000
 500
 8.7% K 3 ,
 2 4.1%
 L 1,700
 (20%)
 가 2004 3/4 8%
 , 9.0% 2001 .



1.3%, 1.7%, 0.4% 2.4% 가
 가 0.2%, 0.1% ,
 1.9%
 352 / , 246 / ,
 1 9 / , 1 4 ~8 .



Office Market Trend



Market Analysis Team
hspark@R2Korea.co.kr