



Office Market Trend

2004 4/4

() 2004 4/4 1,007

10,000m²) 689

(10

가

2004 4/4

2004 1/4

가

(10

10,000m²)

9.4%

9.0%

0.4%P

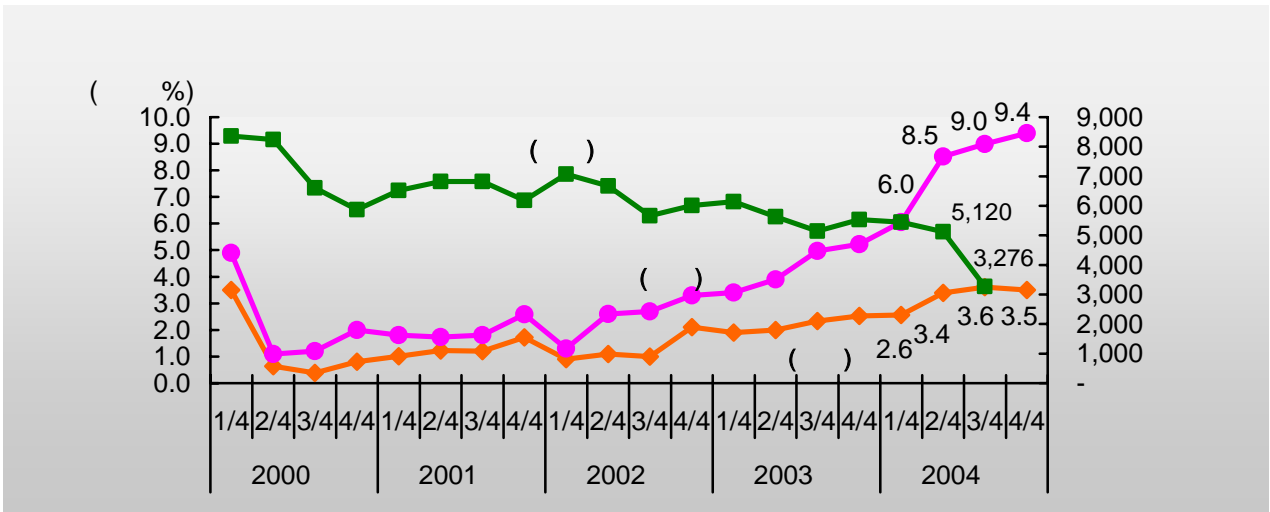
3.5%

3.6% 0.1%P

5.9%P

2.7%P 2 가

가



3.4%

3.2%

0.2%P

3.5%

3.4%

0.1%P

3.3%

/

3.9%

4.2%

0.3%P

, SK

(27,451)

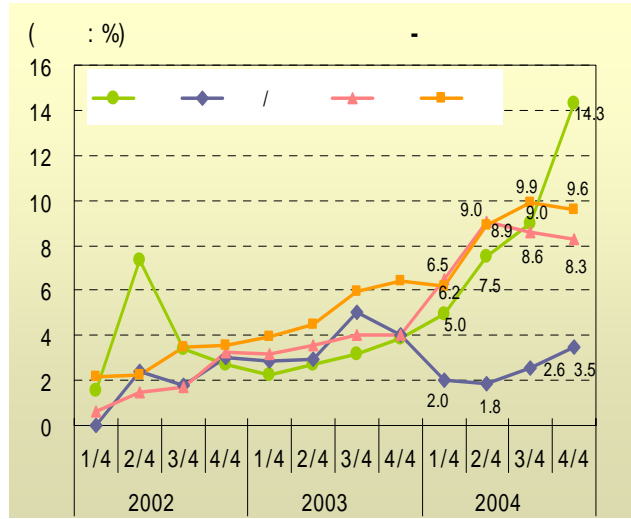
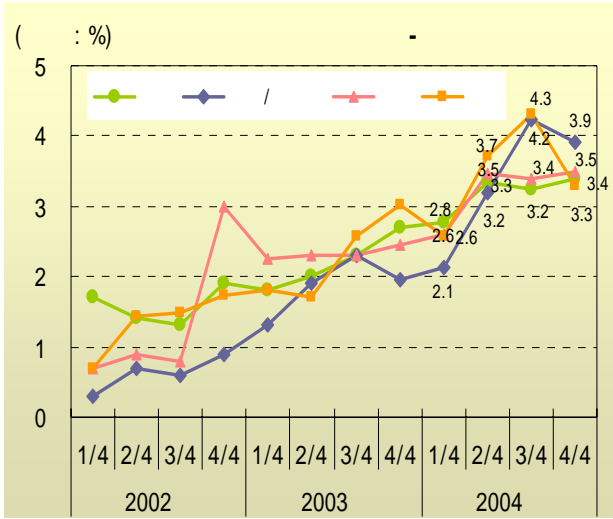
SK

SK





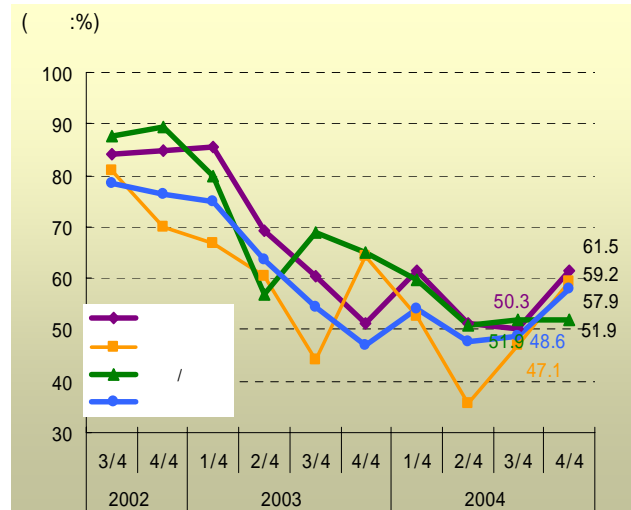
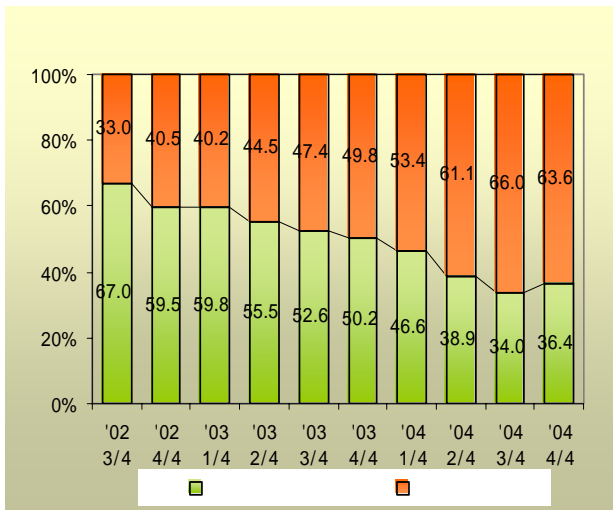
Office Market Trend



14.3% 9.0% 5.3%P
 0.9% 8.6% 0.3%P 9.6%
 9.9% 0.3%P 3.5% 2.6% 8.3%

가 .

GS,



63.6% (36.4%) 27.2%P
 32%P 4.8%P

(/) /



Office Market Trend

M&A, 61.5% 가 . / 가

가

가

“ , ”

4.3% 5 6 5 4 63 3 , 6 3 0.9%,

4.7% 62 4 , 6 4 4 2

1.4%, 0.4% / 0.6%

가 0.7% , 41 9

가 2 4 , 2 7 , / 2

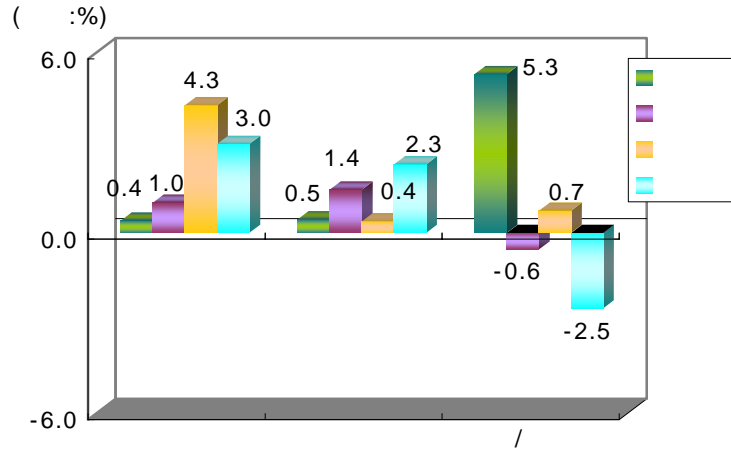
3.0%, 2.3% , / 2.5%

54 8 , 5 4 0.7%, 0.8%

0.1%



Office Market Trend



2004 4/4 < > (: /)

	592	56	3,988	24
	624	64	4,854	27
/	419	42	4,062	20
	633	63	4,540	25
	548	54	3,982	24

Market Analysis Team
(hspark@R2Korea.co.kr)