



Office Market Trend

2004 2/4

() 2004 2/4 1,172

10,000m²) 746

(10

“4 3% , 가”

2004 2/4 4 (2000 2/4) 1~2%

3%

2%

가

(10 10,000m²)

8.5%

2004 1/4

6.0% 2.5%P가

3.4%

2.6%

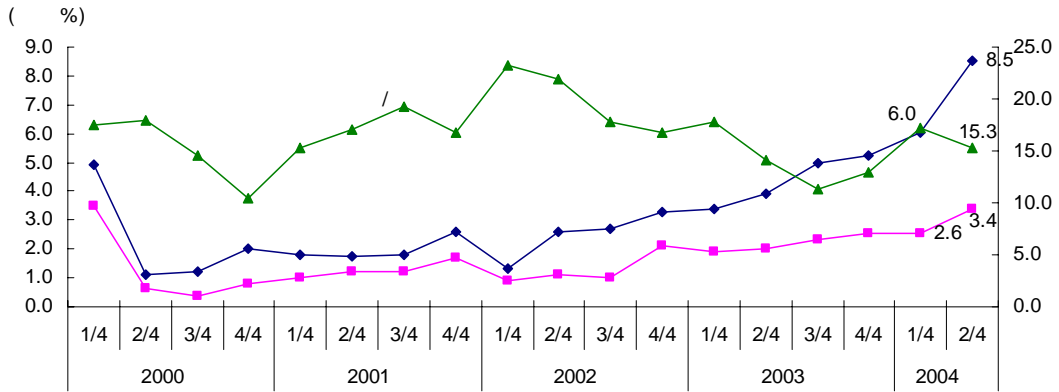
0.8%P

5.1%P

(3.4%P)

1.7%P

가



/

7.5%,

9.0%,

6.3%

/

2.5%가

/

1.8%

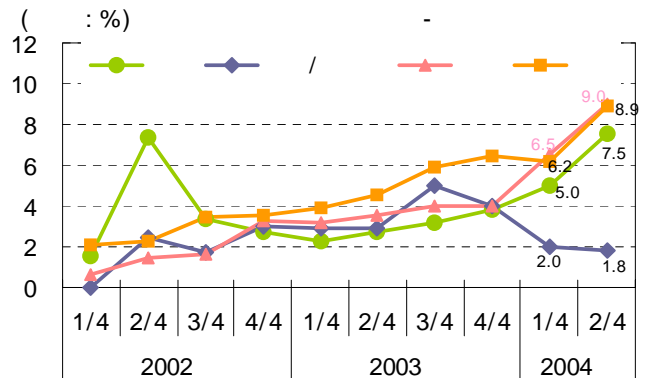
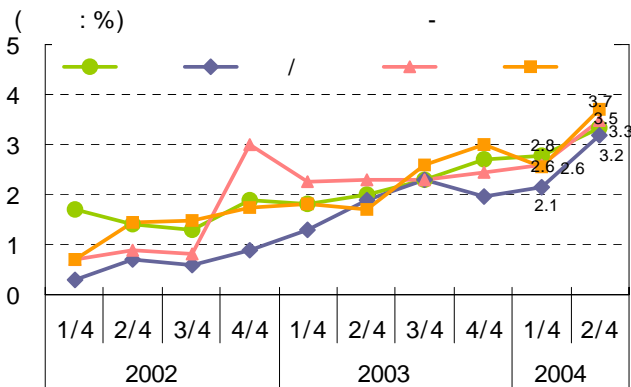
0.2%P가

/

가



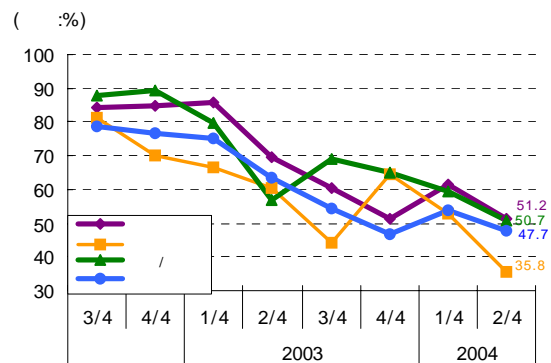
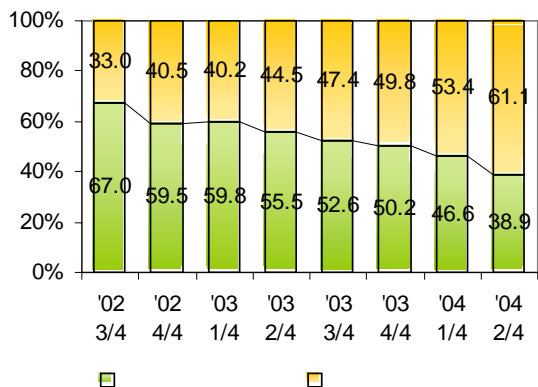
Office Market Trend



3.7%, 3.3%, 3.2%, 3.5%, 2%, 1/4, 2/4, 4, 3%, 5.2%

가

61.1%, (38.9%), 23%P, 2003 4/4 50.2%, 2004 1/4 46.6%





Office Market Trend

17.0, 5 13.6) 1/4 가 2/4 (4

가 가

가 가

“ 가 ... ”

가 62 2 6 1

5 4 ,

6 3 , / 4 1 , 2 3

1/4 가

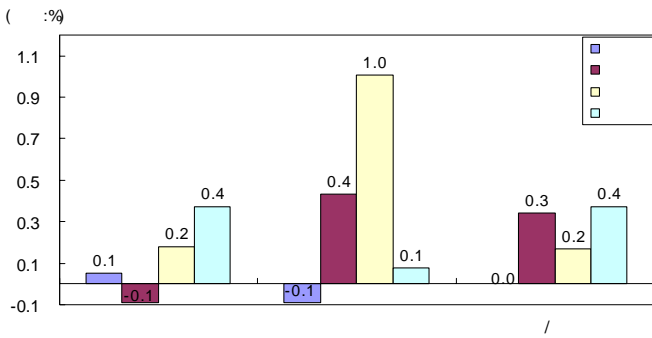
1/4 3.4%

가

Data Analysis Team
lkw@R2Korea.co.kr



Office Market Trend



< 20042 > (: /)

| | 556 | 54 | 3,955 | 23 |
|---|-----|----|-------|----|
| | 609 | 63 | 5,001 | 25 |
| / | 409 | 41 | 3,834 | 21 |
| | 622 | 61 | 4,434 | 25 |
| | 528 | 53 | 3,796 | 23 |